

4-28-66

# Willis-Knighton's 'New Look'

By MARILYN ROBERTSON  
Journal Staff Writer

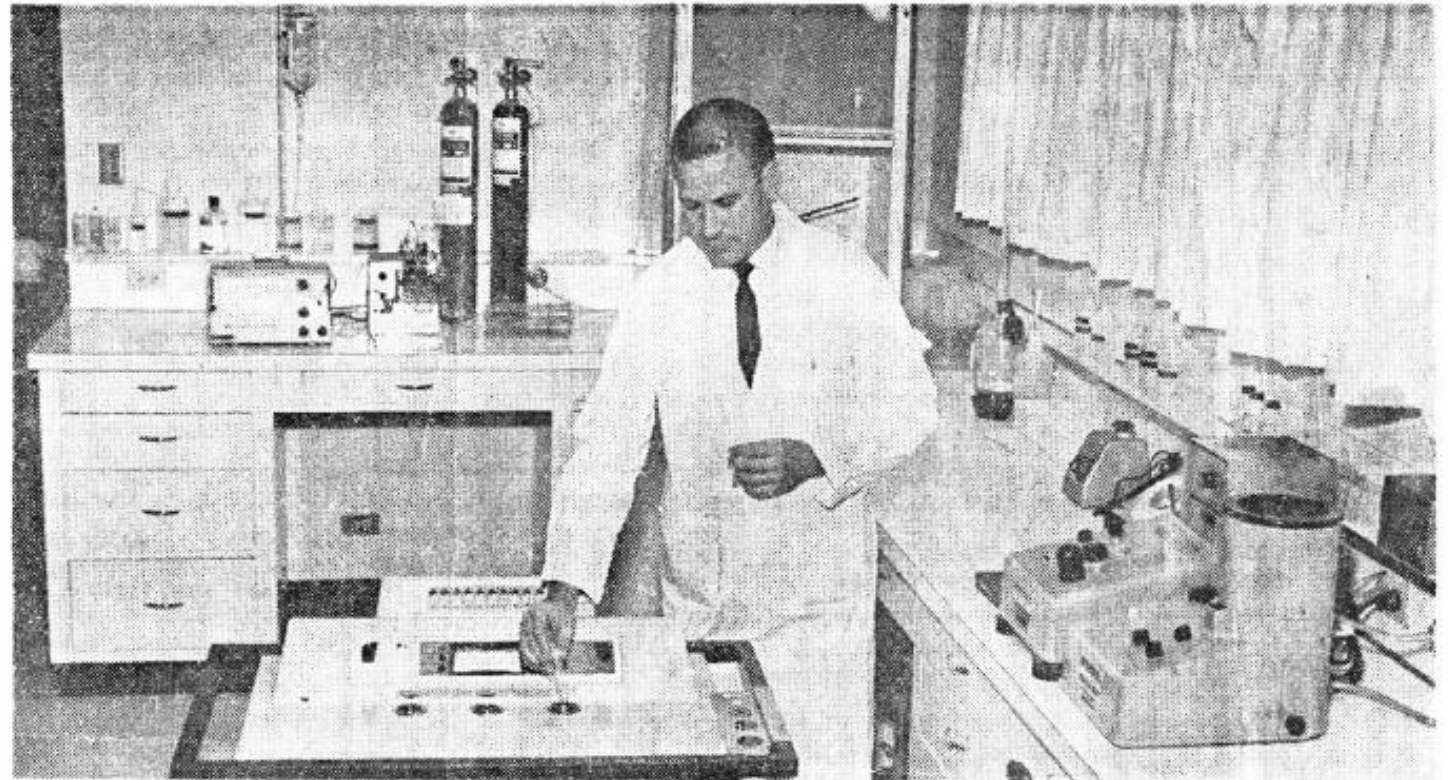
In a brief two-month span, a local hospital has installed and pioneered the clinical-level use of the latest in diagnostic equipment, with one aim foremost: to provide patients with the prompt, highly accurate detection of a variety of ailments.

Carving out three times the work area existing last October, Willis-Knighton Memorial Hospital on Greenwood Road recently brought its clinical laboratory a dramatic step forward with the installation of modern diagnostic equipment valued at \$20,000.

AS A RESULT the hospital's "new look" now encompasses more than half the buff-brick and glass exterior and a modern wing, both added in recent months.

Continuing an expansion program which last year included additions of the new wing—housing among other innovations an intense care unit—Willis-Knighton officials have remodeled a large center section of the hospital, enlarging the chemistry laboratory.

Over the last two months, David Peery, laboratory director and biologist, and his staff members have seen the chemistry laboratory emerge, spacious, well-lighted and efficiency-oriented in an area ad-



**NEW EQUIPMENT**—David Peery, laboratory director at Willis-Knighton Memorial Hospital, demonstrates a Volemtron, one of several pieces of new equipment totaling \$20,000 recently installed at the hospital. The Volemtron, the only one presently in use here, is employed in the study of thyroid function

and in conducting blood volume tests. Other new equipment, visible behind and alongside Peery, is shown in the recently-remodeled chemistry area which was opened up adjacent to the existing laboratories. (Journal Photo by Lawrence Lea)